

Enhancements Made to Ontario's AFRI Database

The Ministry of Energy, Northern Development and Mines (MENDM) has made significant improvements to its Assessment File Research Imaging (AFRI) information available on [OGSEarth](#) and [GeologyOntario](#).

The AFRI database comprises geotechnical reports and maps from nearly 80 years of metal and mineral exploration on Crown Land in Ontario. Since the 1940s, the Government of Ontario has required individuals who perform exploration on claims staked over Crown Land to submit the details of that work, including reports, maps and results to retain the claim. Reports contain geoscience data such as geophysics, geology, geochemistry, diamond drilling and many other geotechnical work types. The AFRI database is useful to explorationists in their efforts to locate new mineral deposits by allowing effective access to previous exploration results

Improvements to the database will ensure that our clients have access to the most up-to-date assessment information. A new internal data entry and management system has been implemented. Improvements also include the provision of additional data to assist clients in searching for assessment work and support further exploration in the province.

In addition, spatial data showing the area where work was performed has been added to the [OGSEarth Assessment File layer](#) for over 2,000 assessment files. Most of these new polygons depict assessment work reports filed since 2014. Additional details, such as property and company names, have been added to the pop-up boxes to provide an improved description of the work performed (see example screen image).

The Assessment File layer in OGSEarth will be updated monthly. As well, assessment files are continually added and updated in [GeologyOntario with direct links to the assessment reports](#). A depiction of the Mining Lands Administration System (MLAS) [mining claims layer](#) is also now available on OGSEarth, allowing users to view claims and alienations.

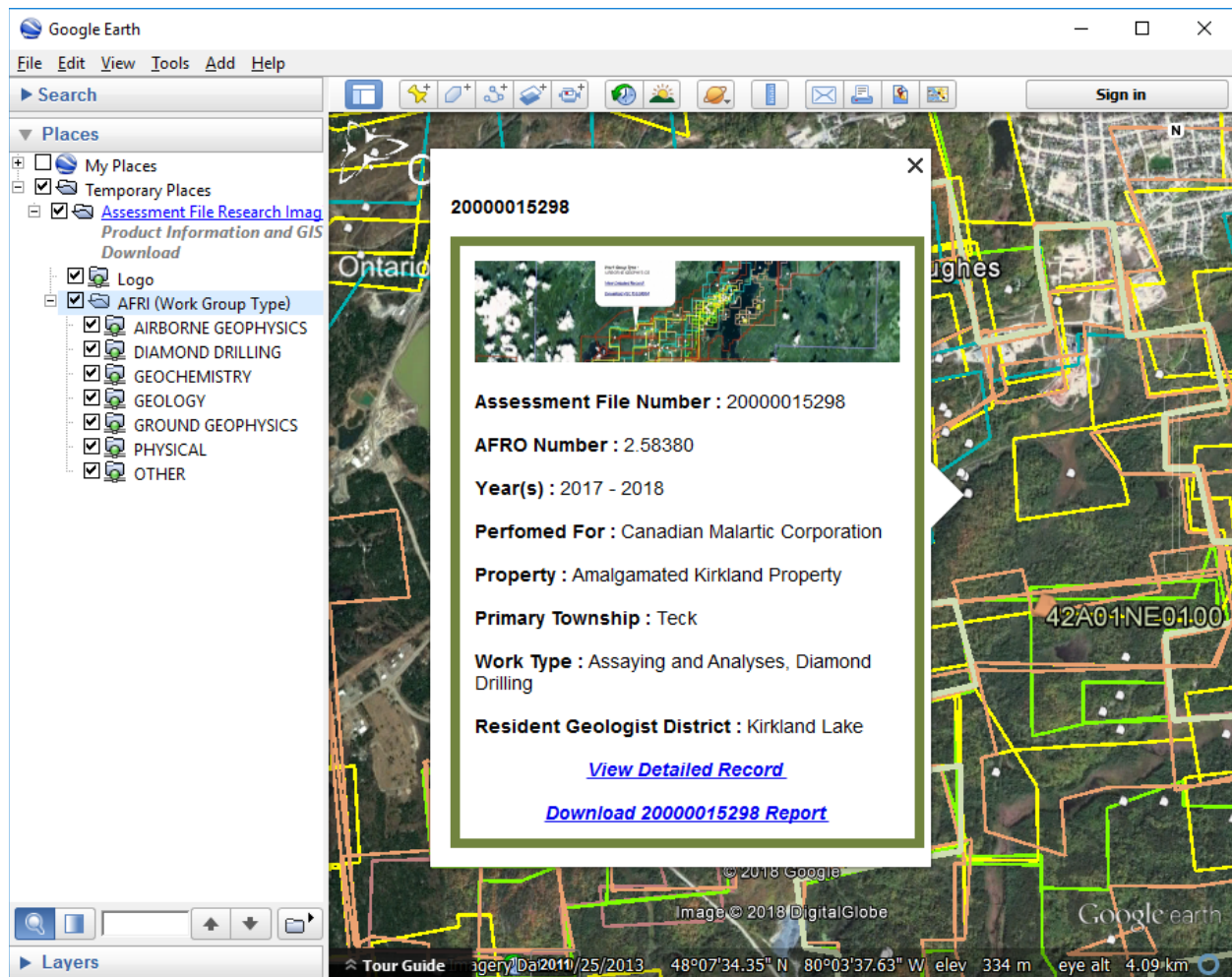
It should be noted that users may need to clear their existing Google Earth cache to view the updated Assessment File layer.

An update to the downloadable GIS data (in shapefile format) and database zip file(s) will soon be available.

For more information or services provided through OGSEarth or GeologyOntario, please contact the Resident Geologist Program office nearest you (see list below).

OFFICE	POSITION	NAME	TELEPHONE	E-MAIL
Kenora	District Geological Assistant	Kristen Wiebe	807 468 2813	kristen.wiebe@ontario.ca
Kirkland Lake	District Geological Assistant	Nazha Sabiri	705 568 4520	nazha.sabiri@ontario.ca
Red Lake	District Geological Assistant	Samuel Lewis	807 727 3272	samuel.lewis@ontario.ca

Sault Ste. Marie	District Geological Assistant	Pamela Sword	705 945 6932	pamela.sword@ontario.ca
Sudbury	District Geological Assistant	Clayton Kennedy	705 670 5733	clayton.kennedy@ontario.ca
Thunder Bay	District Geological Assistant	Sheree Hinz	807 475 1332	sheree.hinz@ontario.ca
Timmins	A/District Geological Assistant	Lusheng (Nick) Wang	705 235 1615	lusheng.wang@ontario.ca
Tweed	A/District Geological Assistant	Austin Smith	613 478 3161	austin.smith@ontario.ca



The image above shows an OGSEarth Assessment File layer with an example of the details included in pop-up boxes.